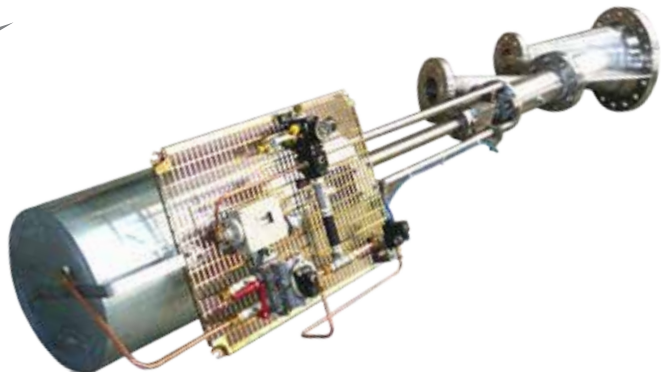




When it comes to **your application**, Strahman has the **solution**.

When the world leader in PET production contacted Strahman for high performance control valves, our expert engineers designed a solution that exceeded our customer's expectations.



Featured Product

Piston-Type Control Valve

The Problem

A major debottlenecking expansion required a control valve to meter flow to a filter pump and achieve more efficient PET production as a result.

The Solution

A Strahman Piston-Type Control Valve with our "M-Control" head/seat, sized using calculations developed by our engineers and a Computational Fluid Dynamics program. The customer provided their process conditions and desired flow rates. Our engineering team designed a parabolic control head for their specific application.

Once installed, the valve worked beyond the customer's expectations, controlling the polymer flow to a 1% variance. The valve has now performed flawlessly for years.

Whether your application is similar, or something completely unique, contact Strahman.
We have the solution to your problem.

Anything's possible...just ask!

Strahman Valves, Inc. 2801 Baglyos Circle, Bethlehem, PA 18020 • (484) 893-5080 • www.strahmanvalves.com

