



PRECISION
AND PERFORMANCESM





For over 100 years,
Strahman has
pioneered many
product innovations
for industrial and
commercial use.

OUR COMPANY

***"TOP-QUALITY. HIGH PERFORMANCE.
SKILLFULLY ENGINEERED."***

This is what our customers say about Strahman.

Since 1921, these words have fueled our passion to be the market leader for Washdown, Process Valve, and Valve Automation solutions. No matter the complexity of your application challenge, Strahman has a product solution for you.

Our Future Stems From Our Past

While our company history guides our core values, our business philosophy looks toward our future through product innovation and enhanced manufacturing capabilities.

The Strahman team is committed every day to provide superior service to our customers. Skilled craftsmen, expert engineers, and a tenured staff of knowledgeable sales and customer service personnel solve tough problems and new challenges, while developing individual solutions to meet and exceed customer expectations.





Cleaning and sanitizing equipment for applications where safety, quality, and performance are the primary concerns—built to outlast and outperform all others.

The industry standard.



Fully assembled automated valve packages and fire-safe thermal shut-off valve assemblies engineered to be reliable solutions for industrial applications.



Engineered solutions for fluid control on highly critical applications from product sampling to inline process control to permanent isolation.

Precision and Performance

'Precision and Performance' is the motto that we live by every day. Strahman continuously earns the trust of thousands of companies worldwide by providing quality, dependable, and high-performing industrial products to solve our customers' unique challenges.

**We are not just building parts.
We are building solutions to meet and exceed customer expectations.**

PROCESS VALVES



Strahman is the originator of the one-piece piston-style sample and drain valve design. This key design feature enables us to handle challenging media safely and effectively with minimal dead space. It also allows us to meet numerous severe service applications, including slurries and polymers, where reliable and safe performance is critical. Over the years, the one-piece piston design has been utilized in many of our other lines of highly engineered valves including our Diverter valves. In addition, Strahman's continued focus on safety led to the expansion of Line Blinds for quick, safe, and efficient isolation of piping and subsequent components.

Sample Valves • Bottom Outlet & Drain Valves • Diverter Valves

Inline Valves • Spray & Rinse Valves • Slab Gate Valves

- **Strahman Sampling Valves** enable the operator to safely draw live samples during the manufacturing process in a clean, safe, controlled, and repeatable manner.
- **Strahman Drain Valves** are designed to be dead-space free to prevent clogging and achieve zero leakage while providing unrestricted flow for trouble-free and efficient tank drainage.
- **Strahman Diverter Valves** are designed to offer maximum unrestricted flow, without clogging or product build-up, for high viscosity products such as slurries and polymers.
- **Strahman Slab/Disc Gate Valves** are designed for unique requirements where large diameters, jacketing, or special materials are necessary. They are well suited as isolation valves for aggressive media applications.

Line Blinds

Not a valve, but a safety device with 100% positive shut-off providing quick, safe, and reliable isolation.



The Strahman Group acquired the BI-TORQ brand in 2015 to enhance our product portfolio and expand offerings in served markets.

In operation since 1981, BI-TORQ Valve Automation provides a diverse catalog of products to facilitate plant optimization and

safety. From automated ball and butterfly valve assemblies to fire safety thermal shut-off valve packages and actuators to custom-engineered valve mounting solutions, BI-TORQ is the go-to brand for complete automation packages and critical flammable media applications.

VALVE AUTOMATION



Standard Ball, Butterfly, & Knife Gate Valves

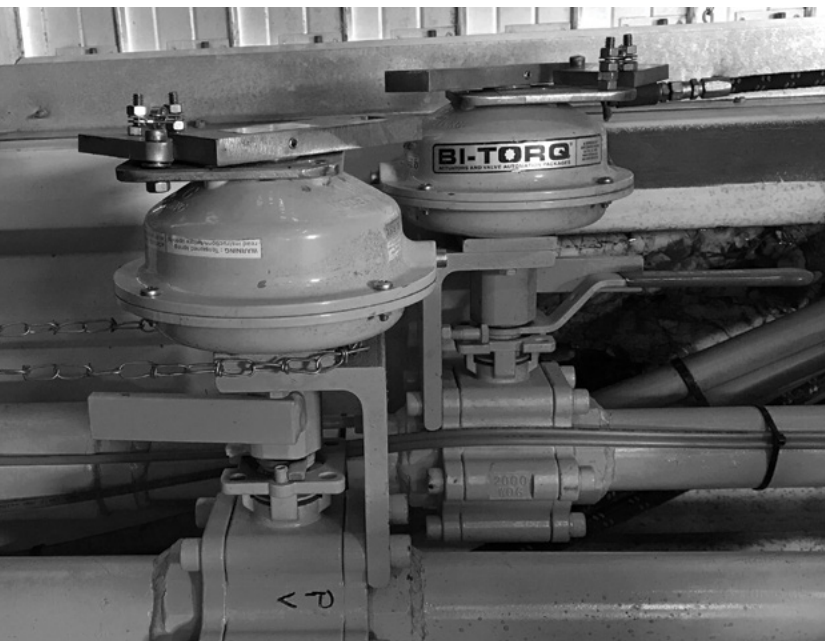
Our Ball, Butterfly, and Knife Gate valves are highly customizable for specific applications with optional materials of construction, body styles, connection types, manual or automatic operation, and limit switches.

Pneumatic & Electric Actuators

A broad range of rack and pinion pneumatic and electric actuators with various torque ranges and numerous options to meet unique valve automation requirements.

Fire-Safe Thermal Shut-Off Assemblies

Our critical fire-safe thermal shut-off assemblies provide total isolation with 100% confidence in the complete automatic shut-down of the valve in a piping system in the event of a localized fire. Certain assemblies are FM approved.



WASHDOWN



Strahman's tradition of producing quality products started with the idea of creating a mixing unit that could safely and effectively distribute hot water for facility washdown. Strahman pioneered the first steam and cold water safety mixing unit, which quickly became the industry standard. The Washdown product portfolio expanded over the years to include spray nozzles, cabinets, pedestals, hoses, and accessories. This enabled Strahman to become a one-stop-shop for customers' washdown needs.

The Strahman Washdown product is synonymous with quality. We test key system components multiple times during production to ensure leak-free connections, proper water spray patterns, and accurate temperature readings. This level of detail provides customers with the confidence that they will receive a superior product right out of the box.



PRECISE
TEMPERATURE
CONTROL

POWERFUL
& EFFICIENT
PERFORMANCE

SAFE &
RELIABLE
OPERATION

Why should you choose Strahman?

Strahman is an ISO 9001:2015 certified manufacturing company with products designed and assembled at our facility in Bethlehem, PA. We adhere to strict quality control standards that are compliant with industry standards.

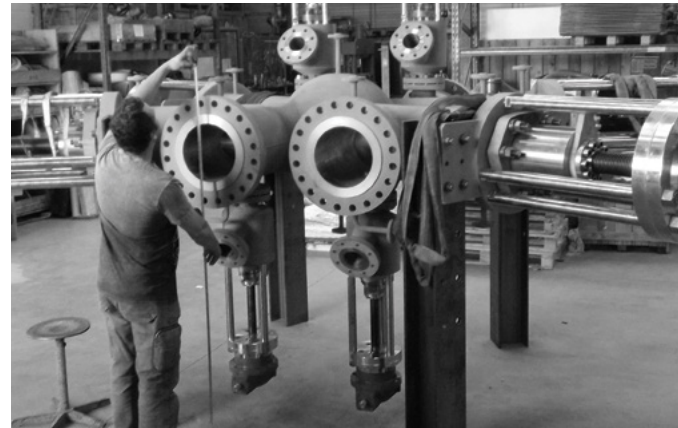


LEAN MANUFACTURING

We deliver on your industrial application needs with a complete array of in-house capabilities including precision CNC manufacturing centers, fully certified welding experts, precision assembly technicians, and a robust quality management system.

ENGINEERING

Our team of highly skilled engineers is well-versed in product design, functionality, and industry specific applications. Strahman engineers will analyze a customer's application challenge and develop a viable solution. The team can provide detailed engineering support including CAD drawings, flow and pressure calculations, specification design code reviews, and on-site support training.



CUSTOMER SERVICE

The Strahman Group philosophy, *"to meet and exceed customer expectations"* is cultivated throughout the organization and is exemplified in the way we treat our customers. **Customer satisfaction, which is our number one goal, is achieved through superior service, product knowledge, and dependability.**



CONTACT US

Need more information? Give us a call today or visit our website.



877-787-2462
484-893-5080



2801 Bagylos Circle
Bethlehem, PA 18020



strahmangroup.com



**STRAHMAN
GROUP**

PRECISION AND PERFORMANCE