

ACCESSORIZE

- ➔ CONTROL VALVE WITH GREATER PRECISION
- ➔ MANAGE SPEED AND AIR FLOW
- ➔ IMPROVE OPERATOR SAFETY



MUFFLER, COMBO MUFFLER/SPEED CONTROL, AND SPEED CONTROL

The **Muffler** reduces noise to acceptable levels. The **Speed Control** reduces the "water hammer" effect when a valve opens too quickly and shocks the pipes. **Combo Muffler/Speed Control** unit achieves both.



NAMUR SOLENOID QC SERIES AND AV SERIES

Universal Solenoids to control the media flow via an electrical voltage (VAC). Quick mounting and convertible for spring return or double-acting pneumatic actuators.



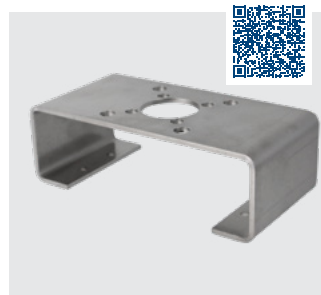
PNEUMATIC POSITIONERS

NEMA 4 and NEMA 7 Pneumatic Positioners provide stable and accurate control of valve positioning. Options include gauges, switches, flat top lenses, or high visibility dome (shown).



LIMIT SWITCHES

Provides visual indication of an open/closed valve via on/off feedback. SPST Proximity, SPDT Mechanical, and DPDT switches in NEMA 4, Nema 7, or IP67 enclosure depending on model.



LIMIT SWITCH BRACKET

Limit Switch Bracket for mounting NEMA 4 and NEMA 7 limit switches to the pneumatic actuator.



DOME INDICATOR

The **Dome Indicator** visually indicates whether a valve is open or closed.